



Piedmont Triad Woodturners Association

Newsletter - July 2006

www.ptwoodturners.org



NEXT MEETING:

Saturday, July 8th 6pm at Woodcraft Store in Greensboro

DEMONSTRATOR:

Chain Saw Demo & Ice Cream Social

FUTURE DEMONSTRATORS:

August 1st – Bob Moffett – Finials & Ornaments

NOTE FROM THE PRESIDENT:

Please, someone volunteer to serve as Librarian! It is neither a difficult nor a time-consuming job. It won't be long before we will be electing new officers. **Please**, consider allowing your name to be put into nomination for one of the offices. The club has great potential for providing a variety of services to our members and to the greater community, because we have many very talented members. However, the club can only be as good as the members are willing to make it.

Don't forget that we will **not** meet at the usual location on the first Tuesday of July (the fourth!), but will instead meet on Saturday the 8th at 6PM in the parking lot of the Woodcraft Store for ice cream and chainsawing. Come learn how to cut a log into turning blanks. Bring along a log to work on. Bring the family.

Come to the Threshers Reunion in Denton June 30 – July 4 to see our club's booth and enjoy the old time activities.

We will be back on our regular meeting schedule in August, so we will meet on the 1st. Bob Moffett will demonstrate how he turns Christmas ornaments. Just in time for all of us to turn a bunch in time for the Holidays.

Bob Muir

MINUTES OF May 2nd MEETING:

We were honored to have as our guest, Joe Ruminsky from Fairview NC. Joe spent the first 30 years of his professional life as a Teacher and Principal. Oh no, I sure hope he does not grade my grammar and spelling!! He has been a Wood turner for the past 7 years. Four of which have been in a professional/production capacity.

Joe had a real challenge. His presentation was "8 Projects in 2 Hours" and Yes, I did keep count. He began the presentation by throwing some shavings against the back wall. You sort of had to be there for that to be funny!!! It was. He then shared some of his common sense wisdom with us. He gave us some good tips for a template to set up the sharpening jigs in order to reproduce our grinds over and over. Basically he states



that you should experiment with Jigs and tool grinds and find one that works. If it works, then it is right.

Project #1

Bottle Stoppers- Joe uses a 3/8" bolts in a Jacobs chuck. The threads are filed some so that a piece of scrap wood could be chucked and remain the correct size for attaching to the cork stopper. In less the 3 minutes he makes a bottle stopper. He points out that he would not be sanding during the demo. Joe states, "Not many things are more boring than watching me sand!" By using the side of his gouge instead of the point, he has demonstrated a Skew like cut, which would not require much sanding if any at all.

Project #2

Using the same set up, he makes a crown shaped bottle stopper.



Project #3

Joe Picks up an 8" piece of Cherry that is 2" x 2". He has drilled a 1" hole in the end using a forstner bit. He now mounts the forstner bit in the Jacobs chuck and uses it as the drive center to mount the wood upon. Yes he did, and it really worked! He quickly turned a cup on the handle with a ball on the bottom; Joe leaves the cup a bit thick. Remember this is a toy to be played with. He adds some decorative bead details. The ball can be separated and string inserted in both pieces.



Project #4

Spoon- or scoop, some people would call it. Using a piece of square stock, turn the shaft to a comfortable fit in your hand. He now creates a ball on the end that will be the spoon. Turn it round without leaving any flat spots. Joe has created a jam chuck just the same size as the ball. One important part is that he cut a slot across the chuck. This has 2 benefits. It is used to seat the handle at a certain depth and it allows you to remove the spoon once finished hollowing. All the hollowing is done with a scraper. It keeps the pressure towards the chuck and never forces it out. Great idea!!!



Project #5

Ladle-Although similar to the spoon, it has some added features. First it is larger. Also, it is cut on multiple axis. This fact alone adds some challenge since you will be doing finishing cuts while not in complete contact with the wood. . The first cut made the ball and the general shaft. Move the tail center up 3/8" to change the transition from the ball to the handle. Next move the tail center 3/8" below center and cut finger holds and complete the tail end of the ladle. Now remove and remount to the



jam chuck that is custom made for the size of the ball. It is inserted at an angle to create the desired effect. Hollow out the ball and the ladle is complete. Unlike me, he never cuts a hole all the way through the body.

Project # 6

Spatula- This is a great project for leftover pieces of exotic flat wood that you just cannot bring yourself to throw away. The piece is ½” thick and measures about 3”x8”. On one end you will sandwich complementary colored wood on both sides. About the width of your hand will be the proper length. Mount on the lathe, being very careful to center the blank. Turn it round, knowing that the handle will be the sandwich area. Stop your cut just below the handle area, leaving the remainder flat. Remove from the lathe and bevel the flat area so that it can be used to flip pancakes at your next brunch.



Project #7

Pocket Book Mirror- Mounting 4x4x3/4” in the chuck. He turns what will be the face. Rounding the edges and cutting a recess for the mirror. And wouldn't you just know that the recess is the same size as the chuck jaws in the expansion mode. Once complete, you guessed it; the piece is reversed on the chuck jaws. The back is completely rounded and the piece is ready to have the mirror inserted. Joe noted that the recess should be slightly larger than the diameter of the mirror insert or you will be in line for 7 years of bad luck!



Project #8

Flower Planter- A hole is drilled through the 5x5x2 piece of Walnut. The vessel is shaped to your desire. I think Joe watch too much “Lost in Space” as a kid, because his looked like the Jupiter II. Then you add the pin frog and you have a beautiful planter



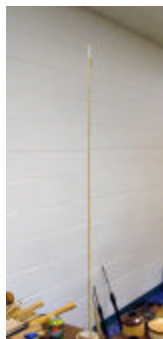
Project #9

Finial- After teasing everyone with a 3 foot long finial hanging in his instant gallery, he shared with us the method for accomplishing the goal. He treads the 3/8” dowel through the headstock. Exposing only a couple of inches at a time. After being shaped, the outfeed is fed through a pvc pipe to keep it from breaking.

Well, he did it. 8 projects (+1) in 2 hours

The Meeting was concluded with Gene Briggs conducting our raffle.

Respectfully submitted, Lan Brady



NEWS:

AAW Members The AAW is taking a survey to help the board know what the members want. We need your input on a range of topics to help us set goals and implement programs. Please go to

<http://www.surveymonkey.com/s.asp?u=840992174112> and fill in the survey. It only takes a couple of minutes.

It is your organization, so let us know what you think.

Group Insurance for Individuals The AAW is sponsoring an insurance program for individual members who may occasionally sell or teach. In most cases homeowners policies in North Carolina do not provide coverage. Go to the following page of the AAW website.

<http://www.woodturner.org/community/pop/>

Virginia Woodturning Symposium Their 2006 Symposium will be held Nov 4th & 5th at Greenfield Education and Training Center in Daleville, VA about 10 miles north of Roanoke with easy access from I-81. See the following website for a list of planned rotations.

<http://www.virginiawoodturners.org/demonstrations.htm>

Instant Gallery. As soon as you bring your piece in, find the sheet to record your name and information about the piece, and put the ID sticker on your piece.

Having woodturning problems? If you would like to bring pieces that you want help with (but don't necessarily want to put in the gallery), bring them to our meetings and we'll provide an opportunity to share your concerns.

Our Mentor Program If you have a turning question go to the list of mentors in the Chapter News section of our website and give one of these fellow turners a call.

Southeast Old Threshers' Reunion in Denton, NC - June 30 - July 4. We will have a booth at this event at which we will demonstrate turning and have some of our turned items for sale. We will set up on Thursday the 30th and participate at the booth Friday through Tuesday the 4th. Even if you are not signed up to help, come down and support us. We will be set up in the barn. See the following site for directions.

http://www.threshers.com/farmpark/seotr_calendar.html

Tops for Tots Don't forget to turn tops and bring them to the meetings.

Newsletters are available in PDF format as always but photos from our Instant Gallery are available separately in a format that allows the viewer to click on a small photo to see a larger version of the photo. Items such as interesting links have been moved from the newsletter to the website.

Members Gallery If you would like to post some of your turnings let us know. We have access to photos from previous instant galleries or can assist you in photographing your turnings.

Turning Tips If you have a tip, share it with the rest of us. We will help you with the preparation (writing and photos) and post it on the website.

Classifieds Do you have something you would like to sell, buy or trade? See this section on the website.

If you are receiving a printed copy of this newsletter via US Mail and would like to get a PDF file via email and save the club the cost of printing and postage, please send me an email to that effect. (jimterry@bellsouth.net).

PHOTOS FROM MAY INSTANT GALLERY

WHEN YOU BRING ITEMS FOR THE GALLERY, PLEASE INDICATE YOUR NAME AND THE WOOD TYPE SO WE CAN PROPERLY ASSIGN CREDIT.

Photos by Mike Evans. All photos are the property of PTWA and the individual woodturner. You can see the color versions by going to the Instant Gallery of our website <http://www.ptwoodturners.org>



John Morris – Closed Segment Bowl – Pine - Incomplete



James Duxbury – Tops Various Woods



Linda Michael – Pierced Bowl Gum



Jim Terry – Fruit Bowl Ambrosia Maple



Jim Terry – Bowl – Mimosa



Linda Michael – Pyrography Maple Platter



Linda Michael – Pyrography Picture



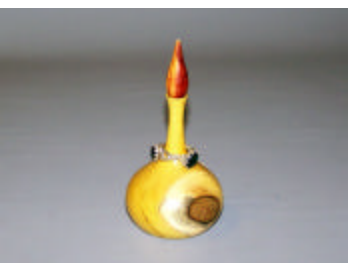
Larry Dodson – Bowl - Walnut



Tim Smith – Mortar & Pestle Red Oak



Ron Roe - Screwdrivers



Earl Kennedy – Ring Holder Osage Orange & Cedar



Lan Brady – Hollow Form Walnut



Jim Yarbrough – Screwdriver Walnut



Bruce Schneeman – Natural Edge Bowl - Maple



Gabby Gutierrez – Pens Tulipwood



Thea Gutierrez – Pens Zebrawood



Dave Forrest – Nut Bowl
American Chestnut & Walnut



Dave Forrest – Bowl
Lyptus & Maple



Glen Marceil – Bowl
Cherry & Walnut



Glen Marceil – Bowl
Bubinga, Canary & Walnut



Earl Kennedy – Warped Bowl
Gum



Dennis Ross – Vase
Box Elder



Gene Briggs – Hollow Form
Birch Plywood & Walnut



Gene Briggs – Hollow Form
Birch Plywood & Mahogany



Gene Briggs – Hollow Form
Birch Plywood & Walnut



Nim Batchelor – Chess Set
Osage Orange



Nim Batchelor – Chess Set
Paduk



Joe Ruminski – Beautiful Natural
Edge Platter

AREA WOODTURNING CHAPTERS :

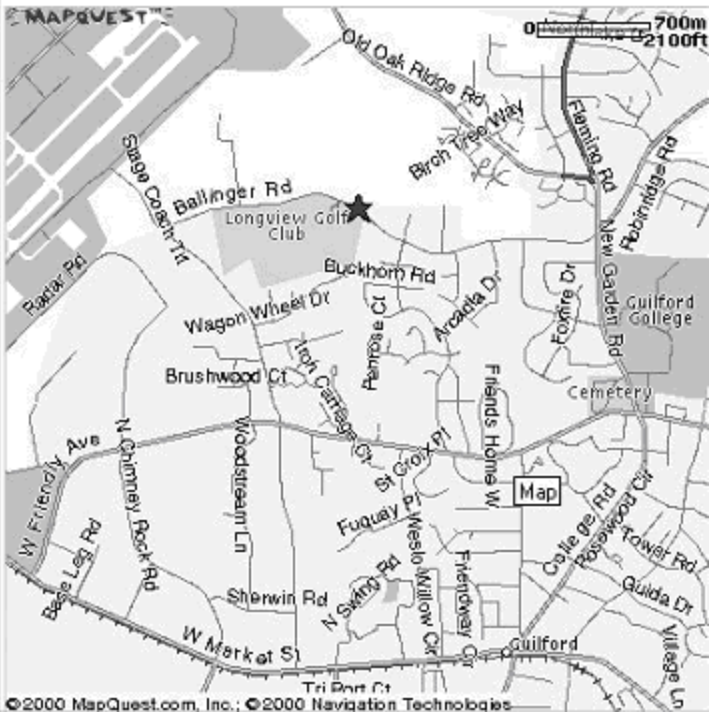
<p>Piedmont Triad Woodturners Association First Tuesday, 7 p.m., Leonard Recreation Center, Greensboro</p> <p>http://www.ptwoodturners.org</p>	<p>Woodturners Guild of North Carolina Second Thursday, 7pm??, NCSU Craft Center, Raleigh</p> <p>http://www.woodturnersguild.com/</p>
<p>North Carolina Woodturners Second Saturday, Woodworking Shop, Hickory, NC. Usually 1 PM (sometimes 10-4)</p> <p>www.ncwoodturners.com</p>	<p>Carolina Mountain Woodturners Third Saturday at Folk Art Center (near Asheville) Blue Ridge Parkway just South of mile marker 382. 10AM – 4PM.</p> <p>http://www.carolinamountainwoodturners.org/</p>

CHAPTER OFFICERS:

<p>Bob Muir, President 4214 Stonehenge Rd. Greensboro, NC 27406 (336) 638-6012 rmuir2@triad.rr.com</p>	<p>Vicki Tanner, Vice President 109 Frissel Dr. Whitsett, NC 27377 (336) 449-0767 vickitanner@traid.rr.com</p>	<p>Lan Brady, Secretary 5202 Ashworth Road Greensboro, NC 27405 (336) 621-6783 lan.brady@mail.cone.com</p>	<p>Gene Briggs, Treasurer 1831 Squire Davis Road Kernersville, NC 27284 (336) 869-4584 n4qbt@prodigy.net</p>	
<p>Paige Cullen, At Large Mbr. 3608-11 East Lee Street Greensboro, NC 27406 (336) 402-7699 nighteagle317@netscape.net</p>	<p>James Duxbury, Prog Chair 3141 Shelly Graham Drive Graham, NC 27253 (336) 227-7168 cyberdux@bellsouth.net www.duxterity.com/ec</p>	<p>Chet Greathouse, Outreach 5002 Northbend Road McCleansville, NC 27301 (336) 235-0900 ckgreat@aol.com</p>	<p>Jim Terry, Newsletter, Website 111 Anita Drive Winston-Salem, NC 27104 (336) 768-0033 jimterry@bellsouth.net</p>	<p>Mike Evans, Photographer 188 Rierson Road Madison, NC 27025 (336) 445-4746 mikevanspt@yahoo.com</p>

MEETING LOCATION: Leonard Recreation Center ((336) 297-4889).

★ 6324 Ballinger Road, Greensboro, NC 27410-9062



To the Leonard Recreation Center
Phone: (336) 297-4889
 Some of the signage is confusing, so be careful.

FROM WEST OF GREENSBORO

1. Take I-40 E.
2. Take exit number 213.
3. Turn RIGHT onto GUILFORD COLLEGE RD.
4. GUILFORD COLLEGE RD becomes COLLEGE RD.
5. COLLEGE RD becomes NEW GARDEN RD.
6. Turn SHARP LEFT onto BALLINGER RD.
7. Leonard Recreation Center is about 1 mile on the right.

FROM EAST OF GREENSBORO

1. Take I-85 S/I-40 W/US -29 S.
2. Take the I-40 WEST/US -220 SOUTH exit, exit number 123, towards WINSTON-SALEM (US -421 N).
3. Merge onto I-40 W/US -220 S.
4. Stay straight to go onto I-40 W.
5. Take exit number 213.
6. Keep RIGHT at the fork in the ramp.
7. Merge onto GUILFORD COLLEGE RD.
8. GUILFORD COLLEGE RD becomes COLLEGE RD.
9. COLLEGE RD becomes NEW GARDEN RD.
10. Turn SHARP LEFT onto BALLINGER RD.
11. Leonard Recreation Center is about 1 mile on the right.

“An accident at the lathe can happen with blinding suddenness; respiratory problems can build over years. Take appropriate precautions when you turn. Safety guidelines are published in the AAW Resource Directory. Following them will help ensure that you can continue to enjoy woodturning.

From American Woodturner

**Dues Renewal or Application for Membership
 Piedmont Triad Woodturners Association**

Date _____ NEW APPLICATION RENEWAL

Name _____ Phone _____ (Home)

Address _____ Phone _____ (Work)

_____ E Mail _____

_____ AAW membership No. _____

Membership Fee: \$24.00 per year. Dues paid In October each year. We prorate dues if you are joining at other times of the year.
 Oct/Nov/Dec \$24.00; Jan/Feb/Mar \$18.00; Apr/May/Jun \$12.00; Jul/Aug/Sep \$6.00.

Please make check payable to Piedmont Triad Woodturners Association.
 Mail to: Gene Briggs, 1831 Squire Davis Rd, Kernersville, NC 27284